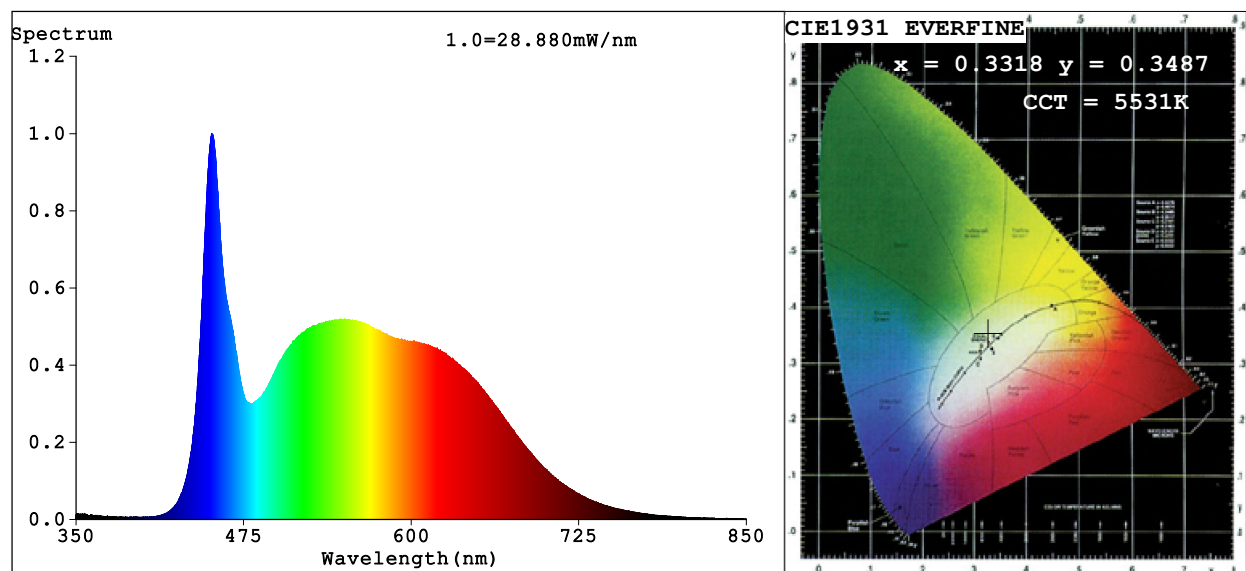


Spectrum Test Report



Color Parameters:

Chromaticity Coordinate: $x=0.3318$ $y=0.3487$ $u'=0.2035$ $v'=0.4813$

CCT=5531K (Duv=0.0042) Dominant WL:Ld =549.3nm Purity=4.2%

Ratio:R=15.8% G=78.6% B=5.6%; Peak WL:Lp=451.2nm FWHM=23.3nm

Render Index:Ra=91.3 CRI=87.1 TM30:Rf=89 Rg=98

R1 =91 R2 =94 R3 =94 R4 =91 R5 =90 R6 =90 R7 =95

R8 =86 R9 =61 R10=84 R11=90 R12=66 R13=92 R14=97 R15=89

Photo Parameters:

Flux = 998.0 lm Eff. : 53.28 lm/W Fe = 3.438 W

Electrical parameters:

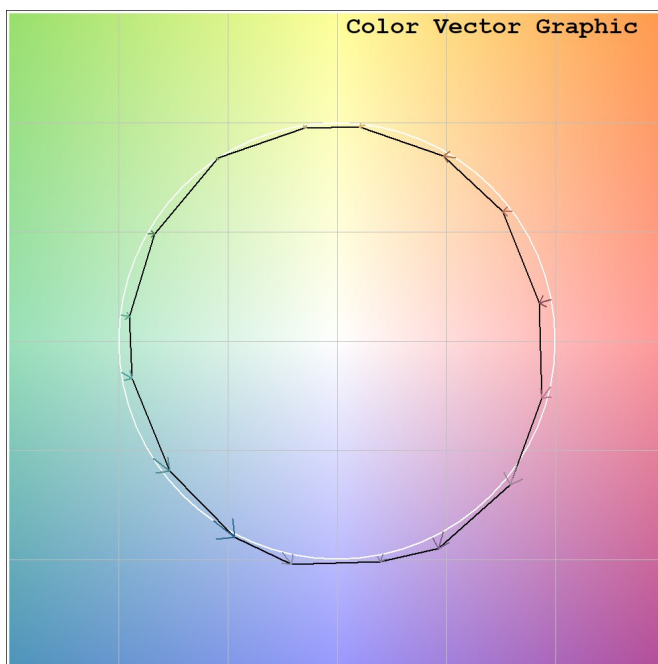
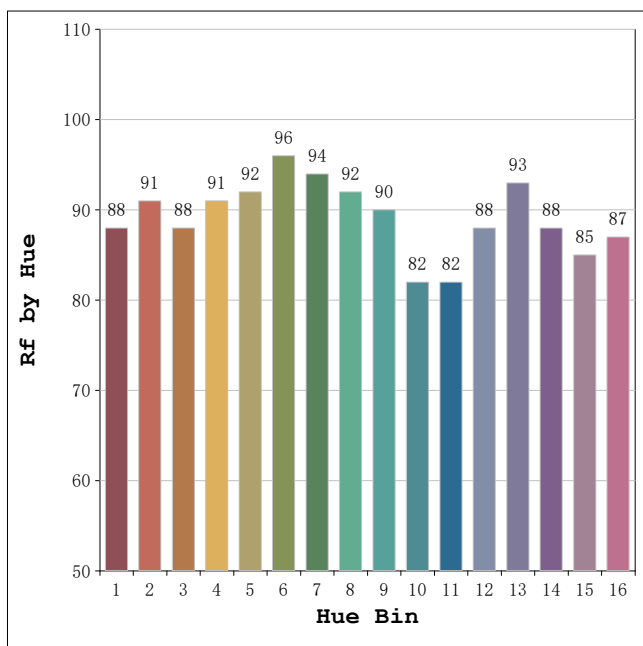
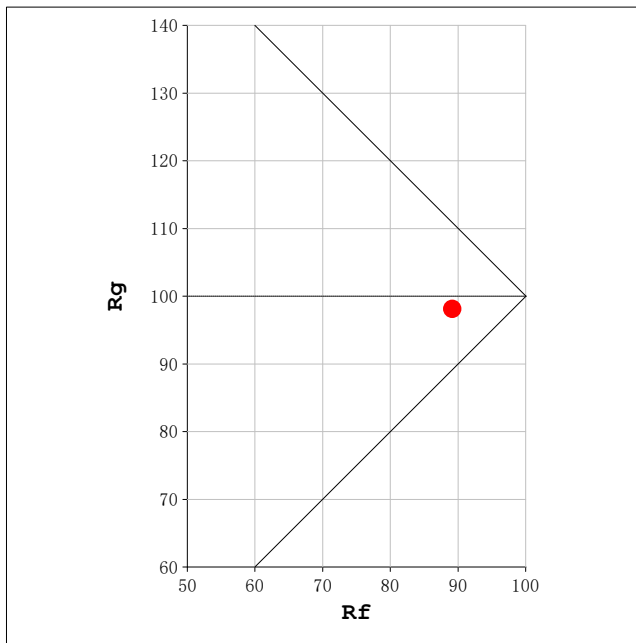
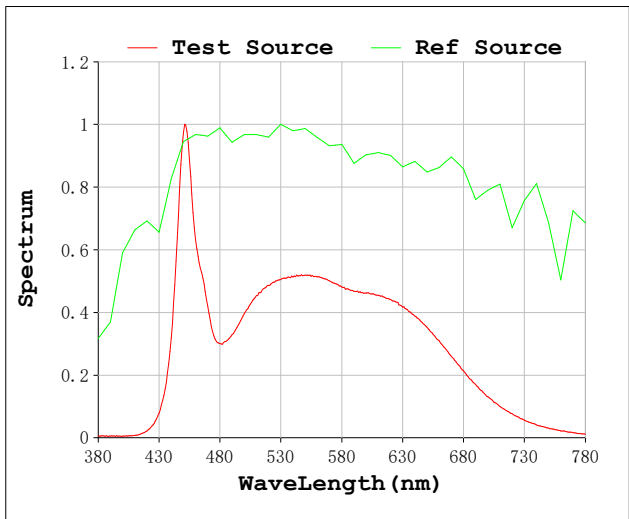
V = 230.07 V I = 0.09044 A P = 18.73 W PF = 0.9002

Status: Integral T = 1562 ms Ip = 52432 (80%)

Model:Spotia Zomm CTT Blanco
Tester:Sergio Carneros
Temperature:20Deg
Manufacturer:Luz Negra

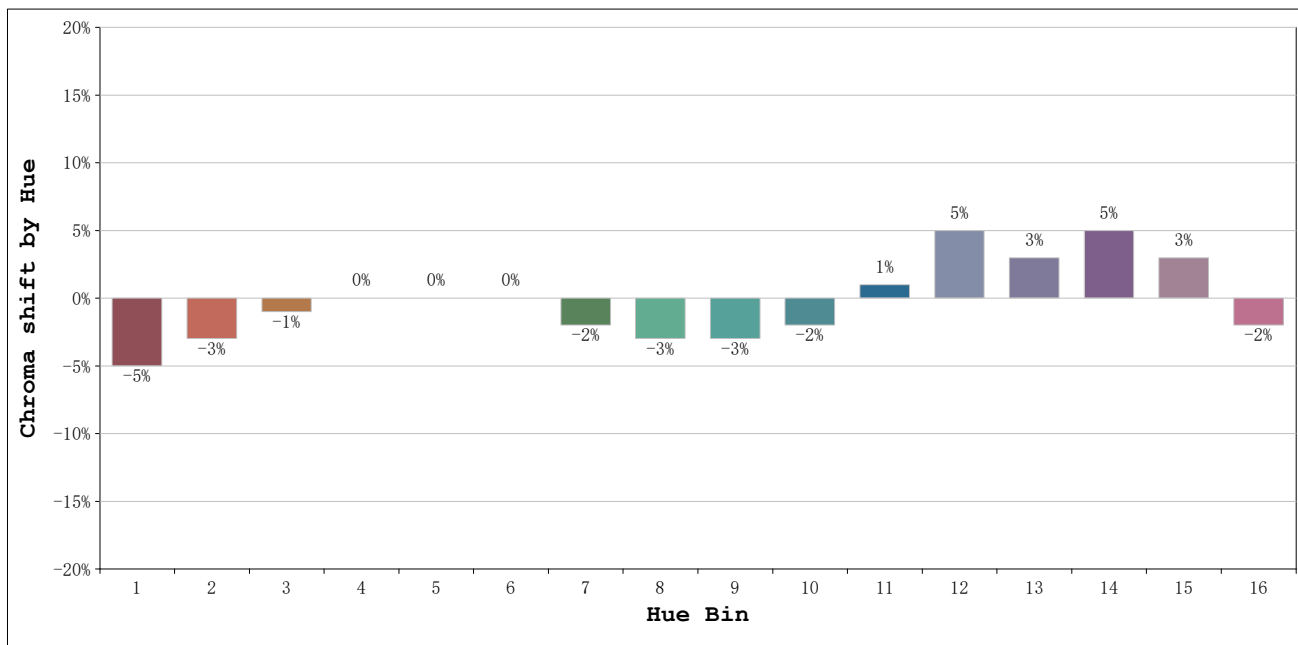
Number:6000k 20° Panal de abeja
Date:2026-03-23 08:58:54
Humidity:50%
Remarks:1 unidad

Rf: 89 **CCT: 5531 K** **u': 0.2035**
Rg: 98 **Duv: 0.0042** **v': 0.4813**



Model:Spotia Zomm CTT Blanco
 Tester:Sergio Carneros
 Temperature:20Deg
 Manufacturer:Luz Negra

Number:6000k 20° Panal de abeja
 Date:2026-03-23 08:58:54
 Humidity:50%
 Remarks:1 unidad

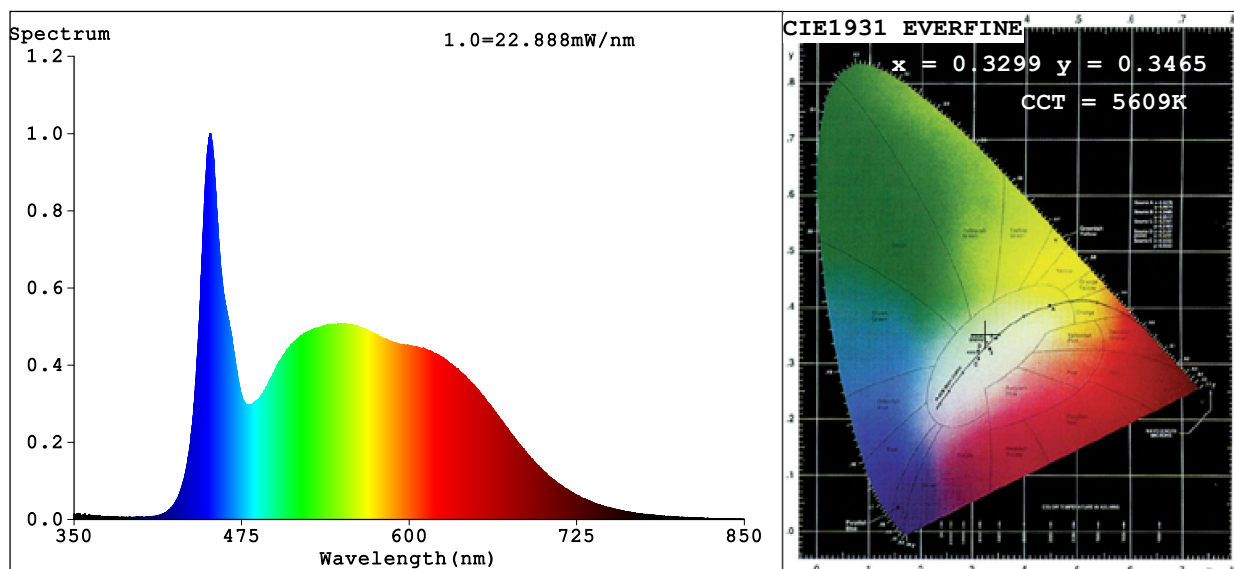


| | | | Graphic shift(%) | |
|---------|-----------------|----|------------------|-----|
| Hue Bin | Hue Angle | Rf | Chroma | Hue |
| 1 | 0.0° - 22.5° | 88 | -5 | 0 |
| 2 | 22.5° - 45.0° | 91 | -3 | 2 |
| 3 | 45.0° - 67.5° | 88 | -1 | 5 |
| 4 | 67.5° - 90.0° | 91 | 0 | 3 |
| 5 | 90.0° - 112.5° | 92 | 0 | 2 |
| 6 | 112.5° - 135.0° | 96 | 0 | 0 |
| 7 | 135.0° - 157.5° | 94 | -2 | -1 |
| 8 | 157.5° - 180.0° | 92 | -3 | 0 |
| 9 | 180.0° - 202.5° | 90 | -3 | 4 |
| 10 | 202.5° - 225.0° | 82 | -2 | 9 |
| 11 | 225.0° - 247.5° | 82 | 1 | 12 |
| 12 | 247.5° - 270.0° | 88 | 5 | 5 |
| 13 | 270.0° - 292.5° | 93 | 3 | -1 |
| 14 | 292.5° - 315.0° | 88 | 5 | -5 |
| 15 | 315.0° - 337.5° | 85 | 3 | -8 |
| 16 | 337.5° - 360.0° | 87 | -2 | -5 |

Model:Spotia Zomm CTT Blanco
 Tester:Sergio Carneros
 Temperature:20Deg
 Manufacturer:Luz Negra

Number:6000k 20° Panal de abeja
 Date:2026-03-23 08:58:54
 Humidity:50%
 Remarks:1 unidad

Spectrum Test Report



Color Parameters:

Chromaticity Coordinate: $x=0.3299$ $y=0.3465$ $u'=0.2031$ $v'=0.4799$

$CCT=5609K$ ($Duv=0.0039$) Dominant WL:Ld =539.0nm Purity=3.1%

Ratio:R=15.7% G=78.7% B=5.6%; Peak WL:Lp=451.2nm FWHM=23.0nm

Render Index:Ra=91.3 CRI=87.2 TM30:Rf=89 Rg=98

R1 =91 R2 =94 R3 =94 R4 =91 R5 =90 R6 =90 R7 =95

R8 =86 R9 =61 R10=84 R11=90 R12=66 R13=92 R14=97 R15=89

Photo Parameters:

Flux = 774.2 lm Eff. : 41.34 lm/W Fe = 2.673 W

Electrical parameters:

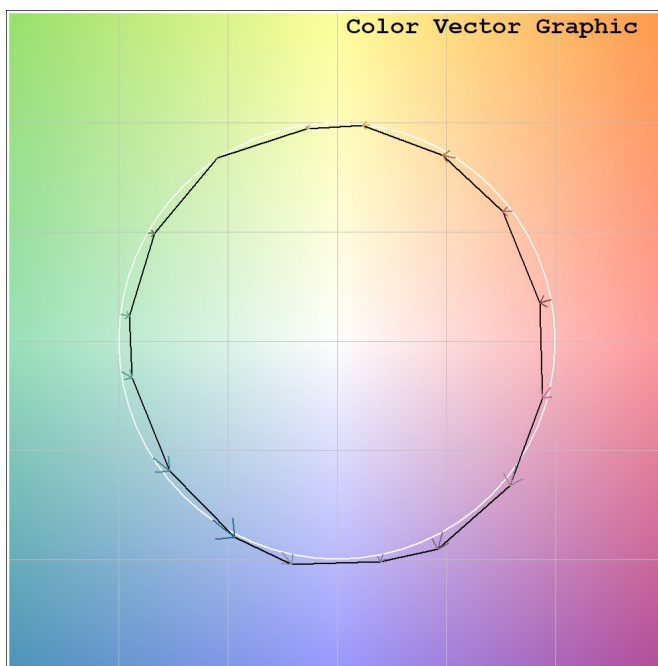
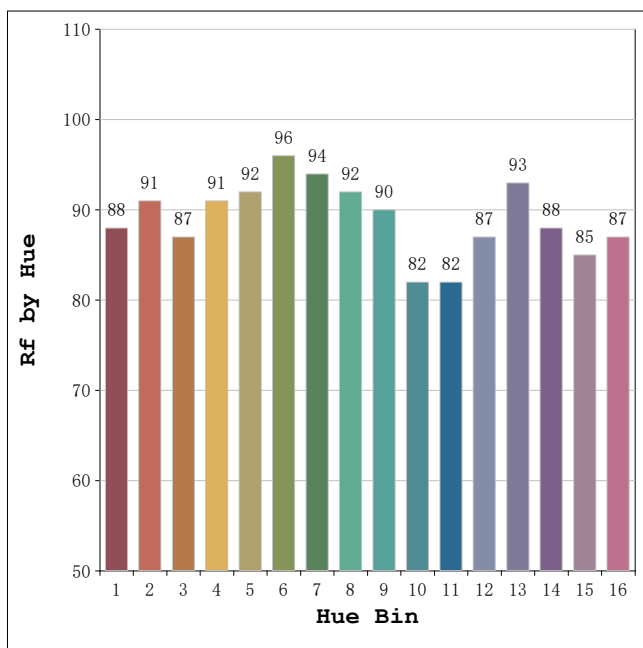
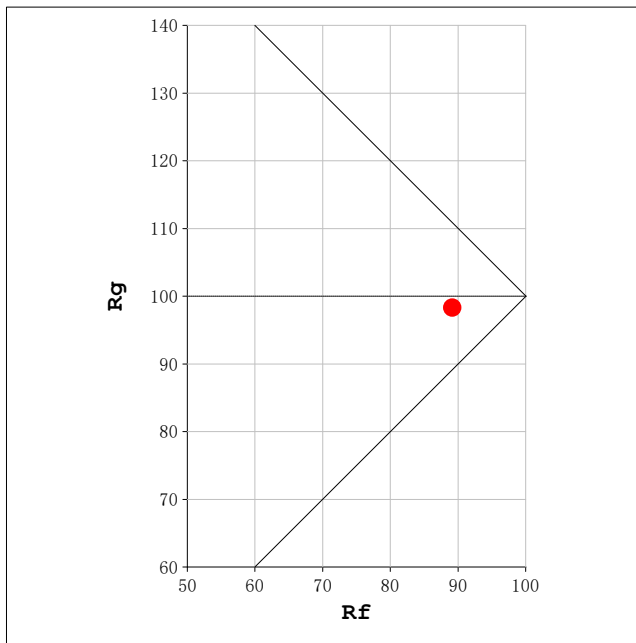
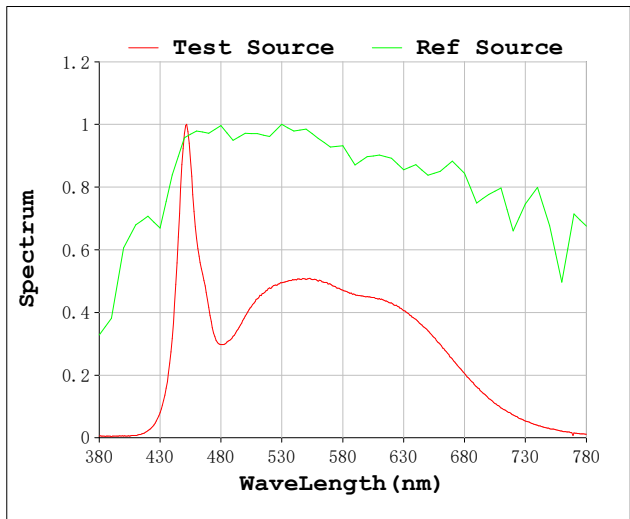
V = 230.07 V I = 0.09042 A P = 18.73 W PF = 0.9002

Status: Integral T = 1562 ms Ip = 41649 (64%)

Model:Spotia Zomm CTT Blanco
 Tester:Sergio Carneros
 Temperature:20Deg
 Manufacturer:Luz Negra

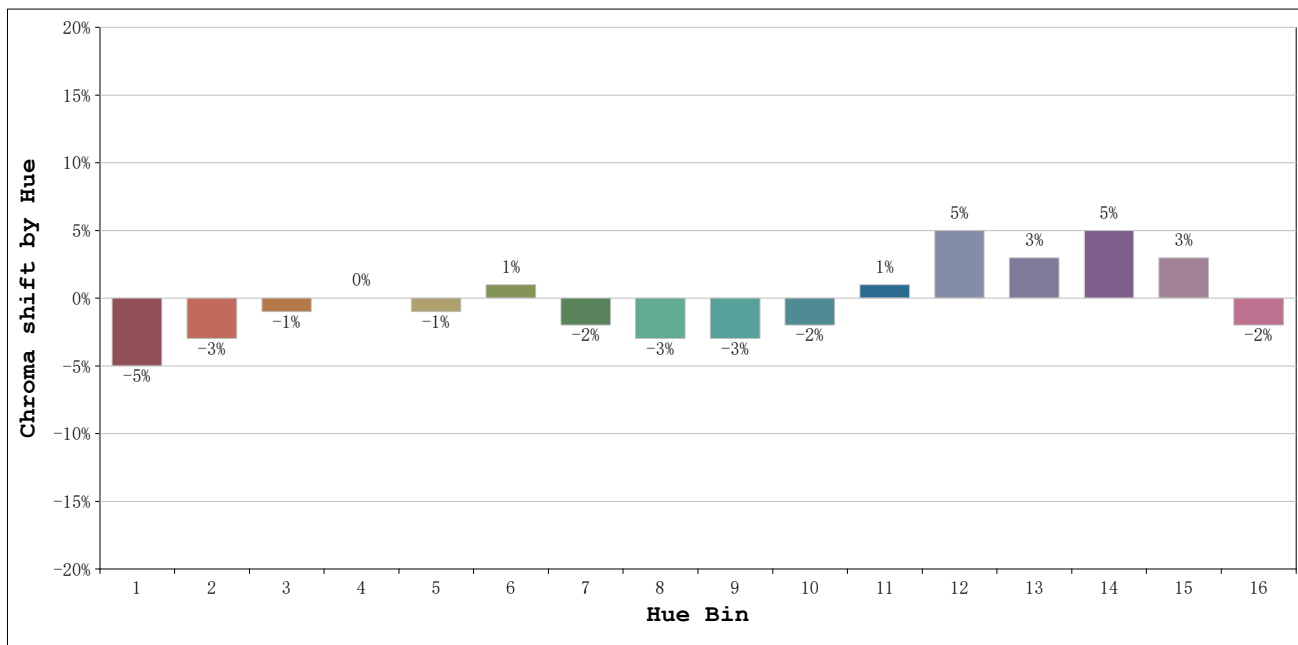
Number:6000k 50° Panal de abeja
 Date:2026-03-23 08:59:37
 Humidity:50%
 Remarks:1 unidad

Rf: 89 **CCT: 5609 K** **u': 0.2031**
Rg: 98 **Duv: 0.0039** **v': 0.4799**



Model:Spotia Zomm CTT Blanco
 Tester:Sergio Carneros
 Temperature:20Deg
 Manufacturer:Luz Negra

Number:6000k 50° Panal de abeja
 Date:2026-03-23 08:59:37
 Humidity:50%
 Remarks:1 unidad



| Hue Bin | Hue Angle | Rf | Graphic shift(%) | |
|---------|-----------------|----|------------------|-----|
| | | | Chroma | Hue |
| 1 | 0.0° - 22.5° | 88 | -5 | 0 |
| 2 | 22.5° - 45.0° | 91 | -3 | 2 |
| 3 | 45.0° - 67.5° | 87 | -1 | 5 |
| 4 | 67.5° - 90.0° | 91 | 0 | 4 |
| 5 | 90.0° - 112.5° | 92 | -1 | 2 |
| 6 | 112.5° - 135.0° | 96 | 1 | 0 |
| 7 | 135.0° - 157.5° | 94 | -2 | -1 |
| 8 | 157.5° - 180.0° | 92 | -3 | 0 |
| 9 | 180.0° - 202.5° | 90 | -3 | 4 |
| 10 | 202.5° - 225.0° | 82 | -2 | 9 |
| 11 | 225.0° - 247.5° | 82 | 1 | 13 |
| 12 | 247.5° - 270.0° | 87 | 5 | 5 |
| 13 | 270.0° - 292.5° | 93 | 3 | -1 |
| 14 | 292.5° - 315.0° | 88 | 5 | -5 |
| 15 | 315.0° - 337.5° | 85 | 3 | -8 |
| 16 | 337.5° - 360.0° | 87 | -2 | -5 |

Model:Spotia Zomm CTT Blanco
 Tester:Sergio Carneros
 Temperature:20Deg
 Manufacturer:Luz Negra

Number:6000k 50° Panal de abeja
 Date:2026-03-23 08:59:37
 Humidity:50%
 Remarks:1 unidad